



HXP-FreightScan™



PRODUCT HIGHLIGHTS

320 mm Steel Penetration

High Image Resolution

Throughput: 150 Trucks Per Hour

Fully-Automated Drive Through Portal

Low Power Requirements & No Moving Parts

The HXP-FreightScan™ is a high-energy portal designed for screening trucks and shipping containers at seaports, border crossings, and cargo centers. The portal is fully automated and can process up to 150 trucks an hour. Its precision software allows drivers to remain in their cars during screening and with a tunnel height of almost five meters (16.4 ft.), even oversized cargo can be scanned.

The system is powered by a betatron capable of penetrating 320 mm (12.5") of steel. Its clear, high-resolution images make it easy for operators to identify threats and verify manifests, while its rugged construction ensures cost-effective operation. Betatron systems have low power requirements and no moving parts, enhancing reliability and allowing the HXP to provide effective and continuous security.

The Astrophysics HXP-FreightScan is designed and assembled in the United States to the highest quality standards. For nearly twenty years, Astrophysics has led the industry in research and development, creating integrated solutions to advance the critical security missions of our customers and partners.

TOMORROW'S TECHNOLOGY FOR TODAY'S SECURITY™

sales@astrophysicsinc.com | www.astrophysicsinc.com

PEO B.V.

info@gotopeo.com
www.gotopeo.com

The Netherlands

Havenweg 16, 6603 AS Wijchen
+31 (0)24 648 86 88

Belgium

Watermolenstraat 2, B-2910 Essen
+32 (0)3 309 32 09

CoC 34107894

VAT NL807859151B01

IBAN NL29 RABO 0356 1960 46

BIC RABONL2U



GENERAL SPECIFICATIONS

Tunnel Size:	3.75 m x 5 m
(WxH)	147.6" x 196.8"
Max Vehicle Size:	3.50 m x 4.85 m
(WxH)	11.48" x 15.91"
Dimensions ¹ :	17 m x 12 m x 5.5 m
(LxWxH)	669" x 78.74" x 216"
Scanning Speed:	8 km/hour (5 mph) Nominal
	12 km/hour (7 mph) Capable
Throughput ² :	150 trucks/hour

TECHNICAL

Steel Penetration:	320 mm Typical, 300 Standard
--------------------	------------------------------

X-RAY GENERATOR & IMAGE PERFORMANCE

Energy:	4 MeV / 7.5 MeV
Beam Direction:	Horizontally Sideward
X-Ray Dose:	0.06 µSv/inspection

COMPUTER & VIDEO

Platform:	Windows® OS
Display Type:	Dual 28" Flat Panel Color Monitors; One 19" Color Monitor
Display Resolution:	4K Resolution

ENVIRONMENTAL

Operating Temperature:	-30°C to 50°C / -22°F to 122°F
Storage Temperature:	-30°C to 60°C / -22°F to 140°F
Humidity:	Up to 95% non-condensing

ELECTRICAL

System Power:	380 VAC, 50Hz, Three Phase 14kVA
---------------	----------------------------------

HEALTH & SAFETY

In compliance with ANSI N43.17 for screening of personnel with X-Rays.
In compliance with ICRP 103, Paragraph 2 of Article 13 of EU Council Directive 96/29/EURATOM, and United States EPA public exposure limits.
In compliance with United States FDA and WHO food screening limits.
Typical radiation leakage is 0.003 mSv to cargo and 0.06 usv to the cab (drivers).

STANDARD FEATURES

Black/White Imaging
Picture Perfect
Pseudo Color
Reverse Monochrome

Continuous Zoom Up to 64x

Auto Image Archiving
Image Review
Management System
Manual Bitmap Archive

Image Annotation
Print Image Capable

Multi-Tier Accessibility
Network Ready
Real-Time Self Diagnostics

CCTV Camera System
Inspection Workstation
Operator Workstation
Speedometer
Traffic Signals
Vehicle Counter

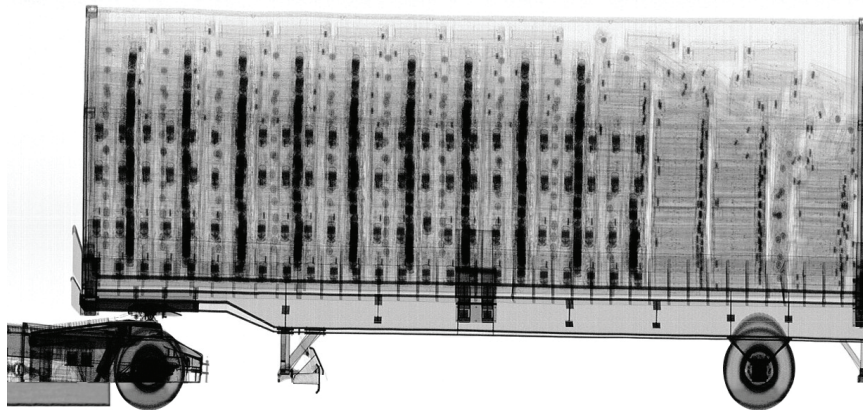
OPTIONAL FEATURES³

Linear Accelerator:
- Energy: 4 MeV / 6 MeV
- Beam Dir: Horizontally Sideward

Material Discrimination:
Radioactive Material Detector

Local Language
Higher Archiving Capacity

Additional Image Analyst Workstation
Container Plate Reader
Custom Paint
Environmental Kit
Inspection Office
Operator Training
Radiation Meter
Remote Inspection Workstation
Truck Plate Reader



ISO 9001: Certified

¹Weight and dimensions of the system may vary depending on customization. Weight does not include shield walls.

²Throughput is an estimated maximum vehicle count. Actual throughput will depend on system and site configuration.

³Optional features may affect lead time, price, and weight of system. Please contact your Astrophysics Sales Representative for more information.

Due to continued product research and development, Astrophysics Inc. reserves the right to amend all technical specifications without prior notice.

Astrophysics HQ
+1.909.598.5488

Astrophysics - DC
+1.202.350.9740

Astrophysics - HOUSTON
+1.713.357.5132

Astrophysics - EMEA
+961.9.832.500/1/2

Astrophysics - INDIA
+91.11.41709990

Astrophysics - ASIA
+63.2.812.0033