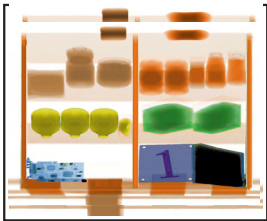


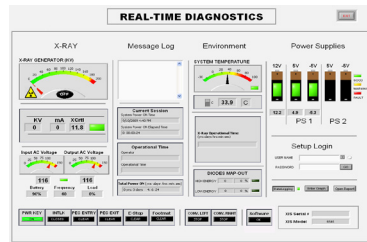
XIS - 1819 200KV

Freight & Cargo Inspection

Extended Tunnel for High Capacity Screening



6 Colour Imaging



Real-Time Diagnostics



Note: Machine picture example shows non UK specification. UK dimensions are available as detailed in full on page 2.

The XIS-1819 200KV is a high capacity X-ray Inspection System with extended tunnel of 180.3cm x 190cm (71" x 75"). The XIS-1819 200KV is designed for large freight and cargo inspection at airports and ports, but is ideal for any location where large scale security screening is required.

Featuring a heavy duty roller bed and rugged construction, the XIS-1819 200KV can support 2,000kg (4,400lbs). This machine consistently delivers outstanding performance and retains a high throughput value.

Featuring exclusive software and superior technology, the XIS-1819 200KV is a quality system designed for large scale screening needs.

An additional exclusive standard feature is 6 Colour Imaging. This enables operators to view

screened objects in 6 colours, with each colour correlating to a specific range of Atomic Z-Numbers.

The whole XIS Series features top-of-the-line software and hardware technology.

Totalpost provide the latest conveyer and cabinet X-ray threat detection equipment. This is coupled with a vast industry knowledge provided through our seasoned and highly professional engineering team.

Totalpost is the exclusive UK and Ireland distributor of the world renowned Astrophysics Inc threat detection range of X-ray security screening equipment.

We offer immediate screening solutions with unparalleled order flexibility and customisation.



XIS - 1819 200KV Specifications

General Specifications

Tunnel size (W x H):	180.3 cm x 190.0 cm 71" x 74.8"
Dimensions (L x W x H):	792.2 cm x 332.1 cm x 232.8 cm 312" x 131" x 92" (UK specification)
Tunnel length:	55.9 cm (22") (UK specification)
Net weight ² :	4660kg (10,273 lbs)
Conveyor speed:	20 cm/s (20 ft/min) Forward or Reverse
Conveyor height:	33 cm (13") from Floor
Conveyor capacity:	Evenly Distributed Load
Construction:	Custom Steel Frame / Panels

Technical

Wire resolution:	40 AWG Typical, 38 AWG Standard
Spatial resolution:	1.0 mm Horizontal, 1.0 mm Vertical
Steel penetration ¹ :	39 mm Typical, 37 mm Standard
Contrast sensitivity:	24 Visible Levels, 4096 Gray Level

X-Ray Generator

Voltage:	200KV
Tube current:	1.0mA
Cooling:	Sealed Di-Electric Oil Bath with Forced Air
Duty cycle:	100%, No Warm-Up Procedure Required
Beam direction:	Horizontally Sideward
Detector:	2432 Channels in an L-Shaped Array

Computer

Processor:	Intel® Core i5, 3.1 GHz, 6MB cache
Memory:	2 GB RAM at 1333 MHz
Storage:	500 GB HDD
Video card:	1 GB Video Card, Dual Digital Display
Platform:	Windows XP Pro
Backup:	Uninterrupted Power Supply (Computer Operation- 20 min)

Health and Safety

Compliant with USFDA, center For Devices and Radiation Health Standards for Cabinet X-Ray Systems (21-CFR 1020.40).
Typical radiation leakage is less than 0.1 mR/hr (leakage less than 0.5 mR/hr permitted by the Federal Standard)

Video

Display type:	Dual 24" LCD Colour Monitors
Display resolution:	1600x 1200; 24 bit/pixel Colour

Electrical

Power requirements:
120VAC: 20 Amp Max
198-230VAC 50/60 HZ: 15 Amp Max

Standard Features

- * 6 Colour Imaging
- * 9 Quadrant Zoom
- * Atomic Z-Number Measurement
- * Auto Image Archiving (50,000 images)
- * Baggage Counter
- * Colour and Black/White Imaging
- * Continuous Scanning
- * Continuous Zoom 2x to 32x
- * Density Alert
- * Edge-Enhancement Imaging
- * Geometric Image Distortion Correction
- * High Penetration Function
- * Image Review (100 images)
- * Manual Bitmap Archive
- * Material Discrimination
- * Multi-Tier Accessibility
- * Network Ready
- * Organic/Inorganic Imaging
- * Operator Training Programme
- * Picture Perfect
- * Print Image Capable
- * Pseudo Colour
- * Real-Time Image Manipulation
- * Real-Time Self Diagnostics
- * Reverse Monochrome
- * Vertical Zoom Panning
- * Heavy Duty Roller Casters
- * Image Annotation

Optional Features³

- *Extended Image Archiving (100,000 Images)
- *ASTM 10 stepwedge/ATSM F0792-01E2 Test Case
- *Custom Paint
- *Computer based Training
- *Climate Variable Operating Kit
- *Entry / Exit Roller Tables (0.5 m Increments)
- *Extended Auto Image Archiving (100,000 Images)
- *Footmat Operator Interlock
- *Heavy Duty Rubber Casters
- *Local language Support (Arabic, Chinese, french, Spanish, and more)
- *Radiation Meter
- *Remote Configuration
- *Screener Assist Explosive Detection Software
- *Threat Image Projection (TIP) Software
- *Supervisor Workstation
- *Suspect Search Station

Environmental

Operating temperature:	0 °C - 40°C \ 32°F - 104°F
Storage temperature:	-20 °C - 60 °C \ -4 °F - 140 °F
Humidity:	Up to 95% Non Condensing

1. As tested on Astrophysics Inc Test Piece.
2. Weight of the system may vary depending on customisation.
3. Optional accessories may affect lead time, price and weight of XIS-5335. Please contact Totalpost for more information. Due to continued product research and development, we reserve the right to amend all technical specifications without prior notice.



Totalpost Mailing & Mechanisation Ltd
1 Skelgillside, Alston
Cumbria
CA9 3TR

Tel: 0845 4900360
sales@totalpost.com www.totalpost.com

Additional offices and processing centres in
Warrington and Swindon

