

# RADTRACE



## Professional radiation dose rate meter

- Ultra-small and light weight
- Simple and intuitive handling
- Shock resistant
- Very fast response time (1 sec.)



WWW.BERTIN-INSTRUMENTS.COM

PEO B.V.

info@gotopeo.com  
www.gotopeo.com

The Netherlands

Havenweg 16, 6603 AS Wijchen  
+31 (0)24 648 86 88

Belgium

Watermolenstraat 2, B-2910 Essen  
+32 (0)3 309 32 09

CoC 34107894

VAT NL807859151B01

IBAN NL29 RABO 0356 1960 46

BIC RABONL2U





# RADTRACE

Gamma dose rate meter for workers subject to radiation exposure

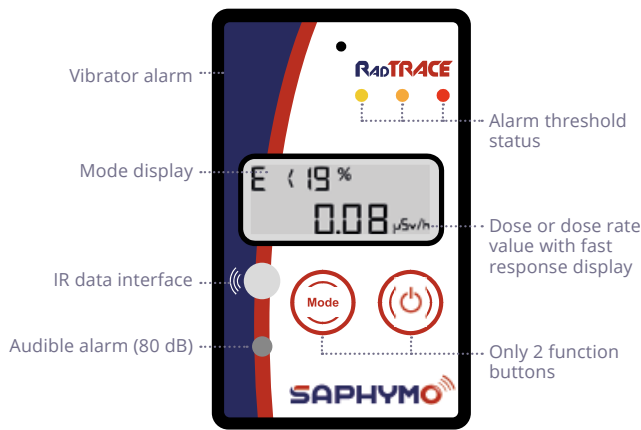
RadTRACE is a robust device equipped with an energy compensated GM tube able to measure the dose rate from 0,1  $\mu\text{Sv/h}$  to 100  $\text{mSv/h}$  with a **very fast response time (1 sec.)**. This **pocket size device** can also be used in a belt pouch or on a wall holder.

Simple and intuitive (with only 2 main modes), RadTRACE is suitable for any **professional application managed by expert or non-expert users**. It provides 3 types of alarm for exposure monitoring: visual (LED), acoustic and vibrations.

All data are saved and can be transferred to a computer through an IR interface.

RadTRACE is operating with ultra-low power technology **suitable for long time operations**. With only 3 AAA standard batteries, the autonomy will last up to 1.000 hours (about 125 days on a 8 hours/day basis). It is **adapted to harsh conditions**, from  $-20^{\circ}\text{C}$  to  $+50^{\circ}\text{C}$ .

## Easy to use, with immediate data visualisation



**Accessories available:**  
communication kit, wall support, belt pouch, suitcase or plastic protective cover

## Health physics devices

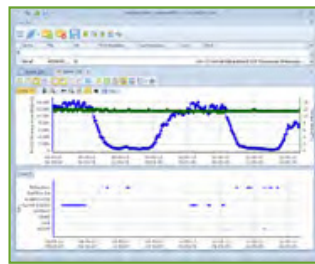
Discover other products of Bertin Instruments

**MINITRACE**  
CSDF



Versatile multipurpose contamination and survey meter

## Easy data analysis



## DataVIEW Software

DataVIEW software is provided with the RadTRACE for easy data analysis. PRO version is available with additional features for professional applications.

## Technical features

**DETECTION PRINCIPLE**  
Energy-compensated GM tube

**MEASUREMENT RANGE**  
From 0,1  $\mu\text{Sv/h}$  to 100  $\text{mSv/h}$   
(from 10  $\mu\text{R/h}$  to 10  $\text{R/h}$ )

**SENSITIVITY**  
2.500 pulses per  $\mu\text{Sv}$

**ENERGY RANGE**  
From 48 keV to 2 MeV ( $\pm 40\%$ )

**DATA STORAGE**  
up to 650 dose rate values and accumulated dose

**ALARMS**  
Visual, acoustic and vibration,  
3 adjustable levels

**AUTONOMY**  
Up to 1.000 hours

**DIMENSIONS**  
71 x 26 x 110 mm

**WEIGHT**  
176 g incl. batteries

With the expertise of **SAPHYMO**

Bertin Technologies S.A.S • Parc d'Activités du Pas du Lac • 10 bis, avenue Ampère, 78180 Montigny Le Bretonneux, France  
WWW.BERTIN-INSTRUMENTS.COM

RCS: 422 511 204 VERSAILLES | SIREN: 422 511 204

PEO B.V.

info@gotopeo.com  
www.gotopeo.com

The Netherlands

Havenweg 16, 6603 AS Wijchen  
+31 (0)24 648 86 88

Belgium

Watermolenstraat 2, B-2910 Essen  
+32 (0)3 309 32 09

CoC 34107894

VAT NL807859151B01

IBAN NL29 RABO 0356 1960 46

BIC RABONL2U

