

ORAMA II

Logos Imaging's ORAMA II system is not only the most popular DR system we offer, it is also the most rugged. With an IP64 rating and a drop test rating of 1 m, the ORAMA II is the ideal solution for field use. This system offers a 14" x 17" image area, 8 mm bottom border, and is shielded for up to 330 kV sources. Coupled with the ASÝRMATOS II interface, the ORAMA II provides users with up to 400 m line of site wireless operation. When used in conjunction with a Golden Engineering XRS3, the system provides over 60 mm of steel penetration as well as material discrimination (organic detection) using the optional CHRÓMA module.



ORAMA II DR System

Logos Imaging's ORAMA II is a large format, portable, DR system that generates high-resolution, high-sensitivity digital images. The standard system configuration includes the flat panel detector, ASÝRMATOS interface, LIA software, 50 m control cable, wireless control, and carrying case. Users can also choose from multiple X-ray source, operating PC/tablet, and carrying case options making the ORAMA II a truly flexible, custom DR solution.

The ORAMA II system includes full wired and wireless capabilities. Wireless communication between the imager and the computer, as well as wireless firing for 5-pin Golden Engineering X-ray machines is included in the base ORAMA II system. There is no need to buy additional wireless accessories.

The ORAMA II is available with three carrying case options. All cases options hold the ORAMA II panel, ASÝRMATOS II interface, batteries, power center, computer, cable reel, XR200 or XRS3 X-ray machine, and all operation cables. Users can choose to have the system packaged in a single Storm iM2950 case, two Storm iM2720 cases, or a custom backpack.

With a battery run time of more than three hours per hot-swappable battery, the standard system provides up to seven hours of battery life allowing users to operate the system in wired or wireless modes all day even when mains power is not available. If mains power is available; the panel, interface, and PC can be powered indefinitely through a single power connection on the power center mounted in the carrying case.

Features

- Includes Full Wired and Wireless Operation
- 8 mm Bottom Border
- High Resolution and Sensitivity, 127 μ m Pixel Size, 3.9 lp/mm
- Greater than 60 mm Penetration in Steel using the XRS3

Specifications

ORAMA II DR SYSTEM

Technology	Amorphous Silicon with TFT
Scintillator	Gadox
Pixel Area	16.7" x 14.1", 42.3 x 35.8 cm
Pixel Matrix	3328 x 2816 pixels
Pixel Size	127 µm
Limiting Resolution	3.9 lp/mm
AD Conversion	16 bits
Communications Interface	Wireless 2.4 GHz (5 GHz Optional) Wired LAN
Communications Range	Wireless up to 400 m* (using 2.4 GHz) Wired 50 m standard, option up to 200 m
Image Transfer	Wired - 5 seconds Wireless - 9 seconds**
X-ray Energy Range	40 - 330 kV
Weight	11.7 lb (5.3 kg)
Dimensions (Panel)	18.7" x 15.7" x 0.7" 47.5 x 40.0 x 1.8 cm
Power	100-240 VAC (50-60 Hz), 2A using included power supply 14.4 V, 93 Wh, Li-Ion hot-swappable battery pack
Operating Temperature	-4° to 122° F -20 to 50 C
Storage Temperature	-4° to 122° F -20 to 50 C
PC Specs (Minimum)	Core i7 Processor, 4 GB RAM, 500 GB hard disk, 14" 1600 x 900 display, Windows 7 Professional

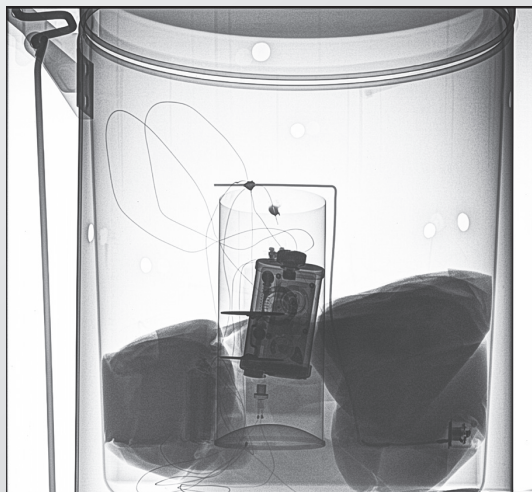
* Line of Sight

** Estimated



Common Applications for the ORAMA II DR System:

- EOD/IEDD
- Forensics
- Customs
- Border Protection
- Event Security



Built with ruggedness in mind, the ORAMA II has a drop test rating of 1 m.

Contact Logos Imaging

Mailing Address

P.O. Box 576, Windsor, CO 80550

Shipping Address

4523 Endeavor Drive, Unit B, Johnstown, CO 80534

Toll Free (866) 939-4044
Office (765) 939-4044
Fax (765) 939-4040
Email sales@logosimaging.com
Web www.logosimaging.com



PEO B.V.

info@gotopeo.com
www.gotopeo.com

The Netherlands

Havenweg 16, 6603 AS Wijchen
+31 (0)24 648 86 88

Belgium

Watmolenstraat 2, B-2910 Essen
+32 (0)3 309 32 09

CoC 34107894
VAT NL807859151B01

IBAN NL29 RABO 0356 1960 46
BIC RABONL2U

