



ThreatScan®-LSC

A large and compact panel included
EOD evaluation Customs control
Vehicle scanning Suspect item
inspection
.....

Portable, real-time x-ray scanning system

ThreatScan®-LSC is a lightweight, portable, battery powered dual x-ray scanning system designed in co-operation with first responders and EOD teams to meet the needs of the field operative.

Quick and simple to deploy, the system produces high quality real-time x-ray images for rapid and accurate decision making.

A detector panel is positioned behind the target; the generator is placed in front. The scan is activated from the imaging station.

The large 600mm x 460mm imaging area of the LS1 panel enables the operator to scan typical bags and packages in a single scan.

The smaller 305mm x 256mm imaging area of the LS3 panel still enables the operator to scan suspect items in a single scan.

The I-Gen can penetrate steel up to 40mm at 120kV and up to 60mm at 150kV.

The LSC system produces sub-millimetre resolution images and there is a range of sophisticated image processing functions available including materials

discrimination, pan, zoom, DeepFocus™, 3D Emboss, measurement and annotation, coupled with high quality images enable the operator to interpret the image quickly and accurately.

The software can also communicate the image on screen to a remote command centre and save images in JPEG and other common file formats.

The standard package comprises a large format panel, compact panel, 120kV or 150kV x-ray generator, tablet pc, ThreatSpect software, batteries, chargers, wireless communication, back pack, cable set and transport cases. Options include tripod, repeater stations, spare batteries and chargers, soft carry cases, wired and fibre optic cable sets.

Ideal for use by First Responders, EOD teams, Counter Surveillance, and Customs and Security Operatives

The system comprises

- Two resilient detector panels
- A portable and robust x-ray generator (120kV or 150kV)
- A tablet pc imaging station
- Batteries and chargers
- Wireless communication
- Carry cases
- ThreatSpect software
- Back pack
- Compact cable set

Features

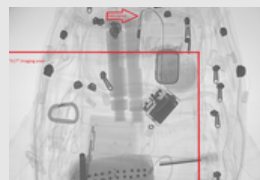
- High penetration with sub-millimetre resolution
- Large and compact detector panels
- Real-time images
- Designed for rapid deployment and ease of use
- Powerful image enhancement and analysis tools
- Intuitive, user-friendly ThreatSpect software
- Scans to 3mm above floor level



Sub range enhancement function



X-ray of drugs in pipes in fuel tank

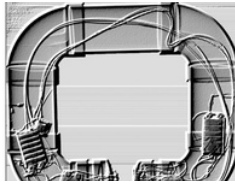


LS1 comparison with 14"x17" detector

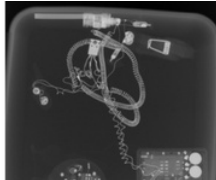


Set of IED devices

ThreatScan®-LSC



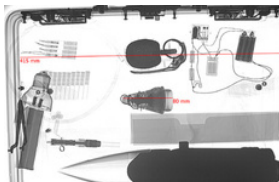
3D Emboss



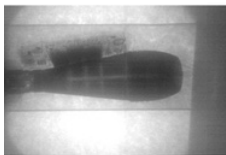
Invert



I-Gen with optional 360° rotating stand



Measurement



Superb penetration - 25cm concrete

X-Ray Detector Panels (LS1 and LS3)

Image / detector resolution	LS1: 1152 pixels, 40AWG / LS3: 640 pixels, 40AWG (400 micron)
Dynamic range	65536 (16-bit) LS1: 5 seconds / LS3: 2.7 seconds LS1: 753mm x
Image acquisition / scan speed	478mm x 25mm (external) (L x H x D) LS3: 462mm x 273mm x 35mm (external) (L x H x D)
Detector dimensions	LS1: 600mm x 460mm / scans to 3mm above floor level LS3: 305mm x 256mm / scans to 3mm above floor level
Imaging / scanning area	LS1: 5kg (5.5kg with battery) / LS3: 2.7kg (3.2kg with battery)
Weight	Self contained rechargeable lithium ion battery (8-hr standby)
Power	Wireless 802.11 a/b/g/n Wired or fibre optic options, TCP/IP ethernet
Communication protocols	-20°C to +55°C / MIL-STD-810F 501.4 and 502.4 -40°C to +80°C / MIL-STD-810F 501.4 and 502.4
Operating temperature	0% to 95% non-condensing
Storage temperature	
Humidity	

X-Ray Generator (I-Gen)

	120kV	150kV
Type	120kV (30-120kV) 1mA	150kV (30-150kV) 1mA
Penetration	38mm guaranteed, 40mm typical	55mm guaranteed, 60mm typical
Focal spot size / Beam angle	0.5 x 0.5mm / 40° x 40°	
Pre-warn	0-99 seconds	
Power	Self contained rechargeable cells (2500mAh) Up to 225 images on one charge (2 hour charge) Mains power option	
Weight (without battery)	5.5 kg (6.6kg including battery and handle)	
Size (L x W x H)	245mm x 180mm x 80mm	

Communications

Wireless (as standard)	802.11g / up to 120m range (extendable with repeaters)
Fibre optic (option)	100m, 150m, 200m
Ethernet (option)	25m, 50m

Imaging Station*

Type	Standard tablet pc (ruggedised options available) * PC specification to be confirmed and agreed at order stage
Operating System	English MS Windows
Power	Mains and battery

Software Features

Adjustable x-ray source parameters (kV, mA & time)
Standard, Inverted and False Colour images Rotate, Histogram, Pan, Zoom, DeepFocus™ On-screen Measurement and Annotation (options) Materials Discrimination and 3D Emboss (options) Image Stitching (option) Multi-file format import (option) Multi-touch functionality for tablet based operation (option)

Safety

Physical safety interlock plus key switch
Audible & visible warning signs
CE compliant

Certification & Codes

NATO	Codification NSN 6350-99-170-6036
------	-----------------------------------